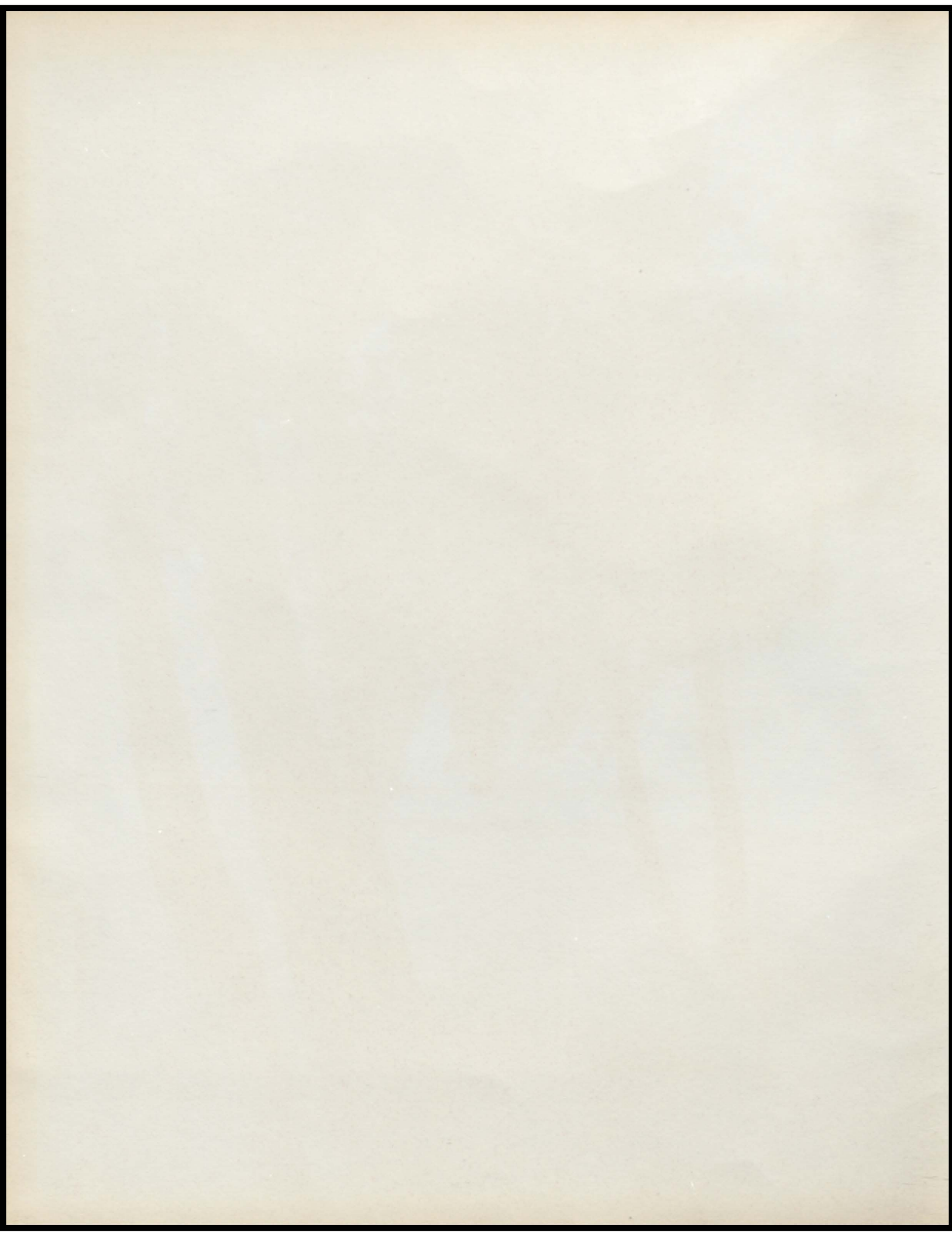
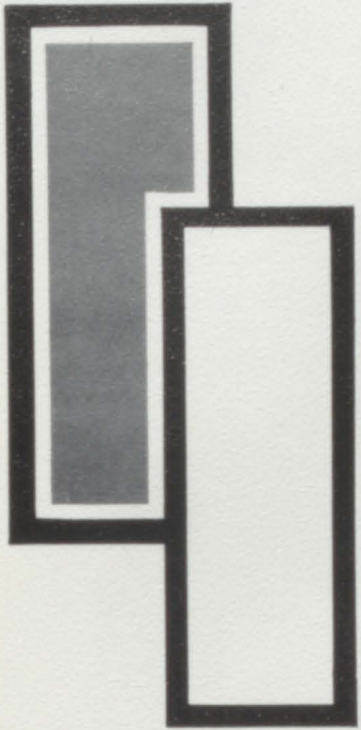


THROUGH THE YEARS









61

MAYVILLE COMMUNITY SCHOOL
Mayville Michigan

Through The Years

Betty Steele, Editor

Table of Contents

Dedication	3
Faculty	9
Graduates	13
Undergrads	23
Athletic	47
Activities	53
Humor	63
Advertisement	65
Autographs	69



61

Dedication



Mayville High School



MR. DUANE SUGDEN
President



Mayville Elementary School



MR. FRED MOSS
Treasurer



Fostoria Elementary School



MR. CLARE MAIERS
Secretary



MR. ALTON DeGROW
Trustee



MR. RICHARD WELLS
Trustee



MR. GEORGE SULLIVAN
Trustee



MR. RAY MANWELL
Trustee

The Yearbook Staff, speaking for the students of the Mayville Community School, wishes to express their sincere appreciation by dedicating the 1960-'61 yearbook to the Board of Education and the Advisory Council. Through their unselfish efforts they have provided better school buildings and have improved our educational program.



SUPERINTENDENT
GORDON L. EWING

It is a pleasure to extend my sincere congratulations to the members of the Senior class of 1961. Your future success is dependent on the knowledge you have acquired during the past twelve or thirteen years of formal schooling.

To those of you who are going on in higher education, we extend our best wishes for your success. To those who have chosen to go into other fields, may you achieve the goal you have set.

Good luck and God speed to all.



LEFT: Mr. Anthony Gohs
RIGHT: Mr. William Lamiman

The faculty and administration have become well acquainted with most of you. Some of you have reached the threshold of a new era in your life. We wish you much success and happiness in whatever venture you may choose. Your destination was reached after much effort on your part. We hope you make wise use of your abilities. As the years slip by we are sure you will look back with pleasant memories on the many experiences encountered at the Mayville Community Schools.

Principals



Office Personnel

Emma Lou Darlymple, Gerry Coxe, Hila Anderson.



Cafeteria

Rhea Stephens & Kate Stephens



Cooks

Erma Spaven, Mary Stilwill



Bus Drivers

BACK ROW: Left to Right, C. Blair, H. Kralik, C. Stratton, R. Ferguson, W. Conant. FRONT ROW: D. Wood, D. Blonde, W. Gilmore, S. Barkowski, R. Fritz, G. Meyer.



Custodians

Wilber Gilmore, Gorden Meyer, Robert Wells, Doug Blonde.



61

Faculty



WILLIAM R. ACKERMAN
History & Math
B.S. Degree; C.M.U.

RONALD ANDREWS
Biology & English
A.B. Degree; U. of M.

ELLA E. BEEBE
English & Spelling
Special Degree; E.M.U.

EDNA BUSSURE
Eng. & Am. Literature
B.S. Degree; C.M.U.



WILLIAM CONANT
Industrial Arts
Power Mech. & Mech.
Drawing
B.S. Degree; C.M.U.

JOSEPHINE EWING
Government & English
A.B. Degree; W.S.U.

A. L. GOHS
English
Masters Degree; U. of M.

DAVID H. HARRISON
Algebra & Math
B.A. & Math Degrees;
M.S.U.



RICHARD HILL
World History & World
Geography
Bachelor of Science;
M.S.U.

RAY, E. HOWARD
Agriculture & Biology
B.S. Degree; C.M.U. & M.S.U.

HAROLD P. JONES
Commercial
B.S. Degree & Business Adm.
Olivet College

RUTH KINGSLAND
Latin & Library
A.B. Degree; C.M.U.



PAT McSHERRY
Science & Phys. Ed.
B.S. Degree; C.M.U.



CHARLES MICHAELS
Geometry, Physics
Chemistry, & Math 11
A.B. Degree; E.M.U.



ROBERT MORRISON
Commercial, Math & Drivers Ed.
B.S. Degree; C.M.U.



FRANK PLISKA
Instrumental & Choral
Music
B.M. & M.A. Degrees;
M.S.U.



NORMA SELEY
Homemaking
B.S. Degree; M.S.U.



ARNOLD SMITH
Math, English, Geography
Special Degree; C.M.U.



FRANCENE SMITH
Math & Civics
Guidance Counselor
B.S. Degree; C.M.U.



ALFRED TITUS
Spanish, Sociology, &
Phys. Ed.
B.S. Degree; M.S.U.



OLIVE AIKEN
4th Grade
Special Degree; C.M.U.



IVA BELL
6th Grade
B.S. Degree; C.M.U.



MARVEL BLACKMORE
6th Grade
Life Certificate; W.M.U.



BELLE BROOMFIELD
1st Grade
B.S. Degree; C.M.U.



GWENDOLYN
DAVENPORT
3rd Grade
Special Degree; E.M.U.



BETTY EASTON
Kindergarten
B.S. Degree; Lapeer C.N.;
E.M.U.



MARGARET ISELER
2nd Grade
B.S. Grade; C.M.U.



MARY LAMIMAN
1st Grade
B.A. Degree; Carleton
College & U. of M.



HELEN LYNCH
2nd Grade
B.S. Degree; C.M.U.



HARTIE MAWDESLEY
3rd & 4th Grades
B.S. Degree; M.S.U.



ESTHER MCKENZIE
5th Grade
E.M.U.



FLORENCE MORRISON
3rd Grade
B.S. Degree; E.M.U.



ALMA SARLES
1st & 2nd Grades
B.S. Degree; E.M.U.



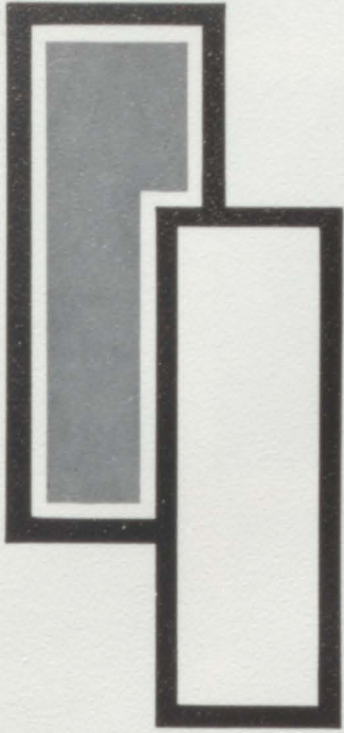
RUTH SHOULTZ
5th Grade
B.S. Degree; C.M.U.



JEAN SICKLER
4th Grade
B.S. Degree; C.M.U.



GERTRUDE VOGT
Remedial Reading
A.B. Degree; E.M.U.



61

Graduates

JUDY WELLS (President)
 "Clever, quick, and full of pep; the word success in every step."

ROBERT KREGER (Vice-President)
 "Not too serious, not too gay; a swell guy in every way."

MARY ANN ERB (Secretary)
 "A wearer of a smile that spells friendship."



WILLIAM WARMBIER (Treasurer)
 "He isn't a wolf; it's just the way he says hello-o-o."

BERNIECE DeGROW (Class Representative)
 "It is only persons who avoid causing jealousies that are worth being jealous of."

TED ACKERMAN
 "One may live and learn, but it is hard to learn and live."



CHARLES AUMACK
 "I'm the good man who is so hard to find."

ALMA BENNETT
 "What's mine is yours, and what is yours is mine."

GRACE BENNETT
 "The joy of life is living it."



ERNEST BLACKMER
 "There's room at the top, but climbing makes me dizzy."

RITA BLACKMER
 "Never loud, always quiet; maybe some of us should try it."

EDNA BROWN
 "Edna Mae and again she may not."

ACTIVITIES: WELLS - Band 1,2,3,4; Pep Band 4; Nurses Club (Treas.) 1,2; Truth For Youth Club 1,2 (Sec. & Treas.), 3 (Vice-Pres.), 4; F.H.A. 1; Glee Club 1; Jr. Play; Annual Staff 4; Newspaper (Editor) 4; Student Council 3 (Sec.), 4; Exchange Student 3. KREGER - Student Council Play 4; Student Council 4; Vice-Pres. of Sr. Class; Jr. & Sr. Plays; Basketball 2,3,4; Football 2,3,4; Track 2,3,4; Varsity Club 3,4 (V. Pres.); Baseball 1,2,3,4; Minstrel Show 3,4. ERB - Band 1,2,3,4; Pep Band 1,4; Nurses Club 3,4 (Vice-Pres.); F.H.A. 3,4 (Reporter); Glee Club 1; Sec. of Sr. Class; Jr. & Sr. Plays; Annual Staff 3,4 (Asst. Editor); Newspaper 4; Minstrel Show 3. WARMBIER - Treas. of Sr. Class; Basketball 2; Football 2; Track 2. DeGROW - Band 1,2,3,4;

Nurses Club 2; Bible Club 2; Glee Club 3,4; Class Rep. 2,4; Vice-Pres. of Jr. Class 3; Student Council 2,3 (Treas.), 4; Minstrel Show 3. ACKERMAN - F.F.A. 1,2,3,4. AUMACK - Band 1,3; Glee Club 1; Basketball 1,2,3,4; Football 1,2,3,4; Track 1,2,3,4; Varsity Club 2,3,4; Baseball 1,2,3,4; Minstrel Show 3,4. A. BENNETT - Library Club 3; Nurses Club 3,4; F.H.A. 2,3 (Parliamentarian), 4; Glee Club 3. G. BENNETT - Band 1; F.H.A. 2,3,4 (Treas.). E. BLACKMER - F.F.A. 1,2,3,4; Varsity Club 4; Baseball 3,4. R. BLACKMER - Library Club 4; Cheerleaders Club 3. BROWN - Library Club 4; Nurses Club 3; Bible Club 2,3,4; F.H.A. 1,2,3,4; Glee Club 4; Minstrel Show 3.

LARRY BEARD
 "There may be greater men, but I doubt it."

HENRY BROWN
 "It isn't what you do, it's what you get away with."

JERRY COLOSKY
 "The course of true love never did run smoothly."



DALE COXE
 "With me girls are a hobby."

ROBERT DRYSDALE
 "All men are born free, but some of them get a girl."

JERRY FINCH
 "If I shoot at the moon, I may hit a star."



JUDY FOWLER
 "May heaven guide, and the world respect this bright eyed girl."

RONALD FOX
 "A joke and a laugh and then another joke."

ALLEN FRIDAY
 "He's our man Friday."



BOB GARNER
 "To be proud of learning is the greatest ignorance."

DELBERT GIFFORD
 "My Ford is my chariot; I shall not walk."

BESSIE GORDEN
 "Blessed are those who say nothing for they shall never be quoted."

ACTIVITIES: BEARD - Band 1; Bible Club 1,2,3; Basketball 1; Football 1,4; Track 1,2,3; Baseball 1. BROWN - Basketball 1,2,3,4; F.F.A. 1,2,3,4; Minstrel Show 3; Varsity Club 3,4; Baseball 2,3,4. COLOSKY - Football 2; Track 1; F.F.A. 4; Minstrel Show 3. COXE - Sr. Play; Basketball 1,2,3,4; Football 1,2,3,4; Track 1; Varsity Club 3,4; Minstrel Show 3. DRYSDALE - Band 1,2; Basketball 1,2; Football 1,2; Track 1,2,4; Minstrel Show 3. FINCH - Library Club

4; Basketball 1. FOWLER - Band 1,2,3,4; Pep Band 1,3; Library Club 1; Nurses Club 3,4(Pres.); F.H.A. 1,2,3 (Treas.), 4(Song Leader); Pres. of Class 1; Jr. Play; Minstrel Show 3. FOX - Library Club 4. FRIDAY - Sr. Play; Football 1,2,3,4; Track 2,3,4; Minstrel Show 3,4; Varsity Club 3,4. GARNER - Library Club 4. CLIFFORD - Band 1,2,3,4; Jr. Play; Basketball 1,2; Track 1,2; Varsity Club 4. GORDEN - Bible Club 2,3; Glee Club 3,4.

JOHN HAMPEL
 "Don't worry about tomorrow; it's still today."

JANET HIITER
 "Laugh and the world laughs with you; Frown
 and you wrinkle your face."

DENNIS IDE
 "I never let school interfere with my educa-
 tion."



NANCY JACOT
 "Youth comes but once in a lifetime, so I'll
 use it while I may."

SUANN JOHNSON
 "A little work, a little play, to keep us going
 all the day."

KAREN JUNE
 "I may be small, but I'll have my way."



BARBARA KUZMA
 "I love to tell the truth and shame the devil."

LA VON LONG
 "Why talk? Others do enough of it."

JANICE LOTTER
 "A friendly blonde with pale blue eyes; a sun-
 ny smile that lights the skies."



RALPH LOUKS
 "Don't let this innocent look fool you."

PAM LYNCH
 "A live wire never gets stepped on."

BRENDA MAIERS
 "I don't know where I'm going, but I'm on my
 way."

ACTIVITIES: HAMPEL - Jr. & Sr. Plays (Manager); Min-
 strel Show 3; Baseball 1. HIITER - Library Club 3,4.
 IDE - Jr. Play (Asst. Manager); Football 1,4; F.F.A. 1,2,3;
 Varsity Club 4; Minstrel Show 3. JACOT - Library Club
 2,4; Nurses Club 3,4; Bible Club 1,2,3; F.H.A. 1,2,3,4;
 Glee Club 2,4; Minstrel Show 3. JOHNSON - Library Club 1,4;
 Nurses Club 3,4; Bible Club 1,2,3,4; F.H.A. 3,4; Glee Club
 3,4; Minstrel Show 3. JUNE - Nurses Club 4; Minstrel
 Show 3,4; Cheerleaders Club 3. KUZMA - Library Club

2,3,4; Glee Club 2,3. LONG - F.F.A. 1; Baseball 1,2.
 LOTTER - Band 2,3; Library Club 4; Bible Club 1,2,3,4;
 F.H.A. 1,2,3,4; Glee Club 1; Minstrel Show 3. LOUKS -
 Band 1,2,3,4; Minstrel Show 3. LYNCH - Band 1,2,3,4;
 Pep Band 1,4; Nurses Club 3,4; Glee Club 1; Jr. & Sr.
 Plays; Minstrel Show 3,4; Cheerleader 2,3,4; Majorette
 2,3,4; Cheerleaders Club 2,3. MAIERS - Band 1,2,3,4;
 Pep Band 2,3,4; Sr. Play; Minstrel Show 3; Student Council
 Rep. 3; Student Council 3.

NANCY MALKOWSKI
"She has a difficulty for every solution."

KEN MANWELL
"He'll say black is blue and prove it, too."

LeROY MEYER
"Don't try to estimate what there is in a quiet person."



CLARE MIDDLETON
"Bashful--? We're not so sure."

NORMA MITCHELL
"Why should the devil have all the good times?"

GAIL MUNTZ
"Full of fun and fancy free; that's the way she seems to be."



DICK OLIVER
"Men of few words are the best."

DORIS ORTO
"The making of friends is the best token I have of success in life."

PEGGY OUILLETTE
"She and books will always be buddies."



SHARON PEET
"Still waters run deep."

LIISA PONKANEN
"Quiet, but subject to violent outbursts of giggles."

HARRY POWERS
"Don't you laugh; the big oak was a little nut first."

ACTIVITIES: MALKOWSKI - Band 1,2,3,4; Library Club 1,2; Nurses Club 3,4(Sec.); Bible Club 1,2,3; F.H.A. 1,2,3,4; Sec. of Class 1. MANWELL - Bible Club 4; F.F.A. 2,3,4; Baseball 3. MEYER - Football 1; F.F.A. 1,2,3,4; Minstrel Show 3,4. MIDDLETON - Jr. Play; Basketball 1,2,3,4; Track 3,4; F.F.A. 1,2,3(Pres.), 4(Sec.); Newspaper 4; Varsity Club 3,4 (Pres.); Baseball 1,2,3,4. MITCHELL - Sr. Play (Prompter). MUNTZ - Band 1,2,3,4; Pep Band 1,2,3,4; Bible Club 1; Jr. & Sr. Plays; Minstrel Show 3. OLIVER -

Library Club 4; Bible Club 1; Glee Club 1; Football 1; F.F.A. 1,2,3,4. ORTO - Band 4; Library Club 4; F.H.A. 4; Sr. Play. OUILLETTE - Library Club 1,2,3,4; Bible Club 1; F.H.A. 1,2,3,4; Glee Club 1; Jr. Play (Prompter); Minstrel Show 3. PEET - Library Club 1,4; Nurses Club 3,4; Bible Club 1,2,3,4; F.H.A. 2,3,4. PONKANEN - Exchange Student From Finland; Bible Club 4(Sec. & Treas.); Student Council 4. POWERS - Library Club 4; F.F.A. 1, 2,3.

JANET PROCTOR
 "Some think the world was made for fun and frolic and so do I."

TREESA RAYMOND
 "Measure not men by Sundays, without regarding what they do all the week after."

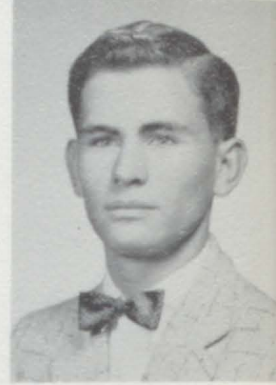
DORIS RICH
 "We know little of her, but what we know is good."



JUDY SCHNEIDT
 "Silence is golden, but who am I to make money?"

VIVIAN SEBERT
 "It's a talent to conceal one's thoughts."

RICHARD SECORD
 "Big men come in little packages."



CAROL SEDDON
 "Men are for the birds -- peep, peep!"

TERRY SHAY
 "I do my best - but you know I'm not very ambitious."

ELMER SHOLES
 "Why show people I'm smart--I might have to work."



LYNN SMITH
 "Men, like bullets, go farthest when they are smoothest."

MARILYN SMITH
 "I'd rather be small and shine, than to be large and cast a shadow."

RONALD SMITH
 "Why study when there are so many other things to do."

ACTIVITIES: PROCTOR - Band 1,2,3; Pep Band 1; Class Sec. 2; Cheerleader 2,3,4; Minstrel Show 3; Pep Club 2,3. RAYMOND - Nurses Club 2; Truth For Youth Club 1,2,3 (Pres.), 4(Pres.). RICH - Truth For Youth Club 2,3; Glee Club 1,3,4. SCHNEIDT - Library Club 4; Minstrel Show 3. SEBERT - Library Club 4; Nurses Club 3; F.H.A. 1,2,3,4; Glee Club 4; Minstrel Show 3. SECORD - Library Club 4; Basketball 3(JV), 4; Varsity Club 3,4; Baseball 1,2,3,4. SEDDON - Library Club 1,2; F.H.A. 1,2,3,4; Glee Club 1; Sec. of Class 1; Jr. & Sr. Plays; Cheerleader 1,2,3,4; Min-

strel Show 3; Pep Club 2,3. SHAY - Band 1,2,3,4; Truth For Youth Club 1; Basketball Manager 2,3,4; Football 2,3,4; Varsity Club 3,4. SHOLES - Library Club 3; Football 2,4; Track 3,4; F.F.A. 1,2,3,4; Baseball 1. L. SMITH - Glee Club 1; Jr. Play; Basketball 1,2,3,4; Football 2,3,4; Track 3; F.F.A. 1; Newspaper 4; Varsity Club 3,4; Baseball 2,3,4. M. SMITH - Library Club 4; Minstrel Show 3; Jr. Play (Prompter). R. SMITH - Basketball 1,2; Football 3,4; Varsity Club; Baseball 4.

BETTY STEELE
 "It matters not how long we live, but how."

GEORGE STEELE
 "What! No girls in Heaven! Then just leave me here."

ANNA MAE STRAND
 "A happy girl with her head in the clouds."



ALLEN SUGDEN
 "Graduation -- come and get me."

DIANNE SUMMERSETT
 "If it's fun, I'm for it."

JUDY SWEET
 "This gal has her future planned and we know it includes a man."



MELVIN TerBUSH
 "We know he's ambitious. Proof: His greatest ambition is to find a thousand dollar bill."

HARRIETT TRACY
 "Genius is one per cent inspiration and ninety-nine per cent perspiration."

TOM TUBBS
 "He has a mild and soft look -- so has dynamite."



DAVID WALKER
 "He's not lazy; he's just in love with rest."

KEITH WALKER
 "The gods gave him more than is his share."

ONALEIGH WASIELEWSKI
 "Is she talking again --- or yet?"

ACTIVITIES: B. STEELE - Library Club 1,3,4; Bible Club 1,2,3,4; F.H.A. 1,2,3,4; Minstrel Show 3; Annual Staff 3,4(Editor); Newspaper 4. G. STEELE - Football 4; Track 2,3,4; F.F.A. 1,2,3(Reporter), 4(Sentinel); Minstrel Show 3,4. STRAND - Library Club 2,4; F.H.A. 3,4; Glee Club 2,3,4. SUGDEN - Glee Club 1; Basketball 2,3,4; Track 3,4; Varsity Club 4; Baseball 2,3,4. SUMMERSETT - Library Club 4; F.H.A. 3,4; Glee Club 4; Minstrel Show 3. SWEET - Library Club 1,2,3(V.Pres.), 4; Glee Club 1,2,3,4; Minstrel

Show 3. TERBUSH - F.F.A. 1,2,3,4. TRACY - Class Treas. 3; Jr. Play. TUBBS - Band 1; Class V. Pres., 1; Class Pres. 2; Minstrel Show 3; Basketball 2; Football 1,2,3,4; Track 2(Manager); Varsity Club 3,4(Sec. & Treas.); Student Council 1,2,3(V.Pres.) 4(Pres.); Student Council Play 4. D. WALKER - Glee Club 1; Baseball 3. K. WALKER - Basketball 1,2; Football 3; Minstrel Show 3. WASIELEWSKI - Library Club 2,3,4; Glee Club 3.

MELVIN WELLINGTON
"Leave room for me. I can grow up."

GERTIE WHEATON
"The blush is beautiful but sometimes inconvenient."

LOVINA WRIGHT
"Why love one; love them all."



ACTIVITIES: WELLINGTON - F.F.A. 2. WHEATON - Library Club 4; Glee Club 3,4; Cheerleaders Club 3; Minstrel Show 3. WRIGHT - Band 1,2,3,4; Nurses Club 3,4

(Treas.); Bible Club 2; Jr. Play; Cheerleader 2,3(JV); Cheerleaders Club 2,3; Minstrel Show 3.

Commencement

Sponsored By SMITH'S TAB



CLASS FLOWER--White Rose
CLASS COLOR--Blue and White
SCHOOL COLOR--Maroon and White

Junior & Senior Banquet



King and Queen

Mary Ann and Bob

Junior & Senior Prom

Hersmidt Dance



This Page Sponsored By MAYVILLE MOULDING

Honor Students



MARY ANN ERB



NANCY MALKOWSKI



JUDY FOWLER



TOP THIRTEEN

FRONT ROW: Left to Right, G. Bennett, J. Proctor, B. Steele, N. Malkowski, K. June. BACK ROW: M. Erb, J. Wells, B. Kuzma, O. Wasielewski, T. Raymond, H. Tracy, J. Sweet.

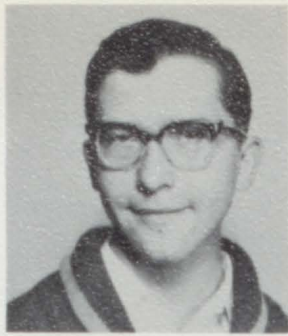


61

Undergrads

Juniors

Jim Welke, Pres.
 Connie Sugden, V. Pres.
 Sharron Howay, Treas.
 Carolyn Gohs, Sec.



Sharon Sarles, S.C. Rep.
 Barbara Bader
 Ronald Bellamy
 Edwin Blackmer



Ann Bodeis
 David Brown
 Shirley Brown
 John Clark



Arnold Clemons
 Penny Cobb
 Larry Coutcher
 Jeannine Crowl



Ileen Currell
 Diane Dalrymple
 James Dennis
 Tom Duncan



Arville Edgeworth
 Sharon Ferguson
 Elaine Fowler
 Carl Fritz





Steve Gergely
Diann Goodell
Henry Gouine
Lester Hall



Ella Mae Harris
Morley Hunter
Peter Jansen
Caylos Johnson



Judy Kelly
Walter Lamphere
Sharon Leitner
Donald Louks



Bob Lynch
Park Maiers
Glenda Malloy
Mary Malloy



Rose Marietta
Jim Marr
Larry Marr
Leo Marr



Sally Matheson
Charles Mercer
Sandra Middleton
John Morodon

David Ohmer
 Judy Petiprin
 Paul Phelps
 Hobart Putman



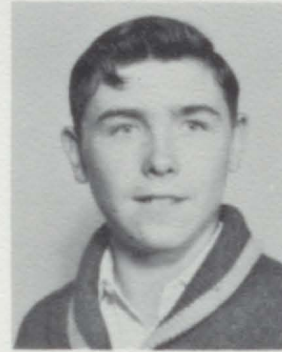
Candy Smith
 Joann Smith
 Mary Smith
 Margaret Steele



Linda TerBush
 Barry Topham
 Steve Vat
 Richard Weiler



John Welke
 Bill White



Sophomores

Gloria DeGrow, Pres.
 Tom Welke, V. Pres.
 Maureen Shay, Sec.
 Larry Pollion, Treas.
 Linda Sarles, S.C. Rep.



Nickie Alfano
 Marsha Audinet
 Carol Bader
 Stephen Baxter
 Thomas Berlin





Janet Broomfield
 Douglas Brown
 Jean Brown
 Val Donna Buhl
 Barbara Chapin



Larry Colosky
 Marjorie Crowl
 Jeanne Fowler
 Floyd Friday
 Lyle Fryers



Gayle Garnsey
 Sally Gouine
 Carol Grimshaw
 Ruth Gross
 Danny Harmon



Bill Hoose
 Danny Hormel
 Bill Iverson
 Martha Kilmer
 Ronald Kowalski



Alice Ladd
 Marilyn Lotter
 Marilyn Louks
 Patricia Lynch
 Dale Lyons



Lynn Maiers
 Dennis Manwell
 John Meyer
 Elaine Middleton
 Ralph Moore



Gail Myers
 Nancy Myers
 Leo Nezucki
 Judy Osowski
 Rollie Palmeter

Donald Peterson
 Marie Phelps
 Rollo Pickens
 Edith Powers
 Gary Putman



Fred Roth
 Glenn Schlattman
 Sue Sebert
 Robert Shephard
 Mary Lou Sholes



Bonnie Smith
 Nancy Smith
 Andrea TerBush
 Sharron TerBush
 Betty Lou Thornton



Margaret Traver
 Dale Turner
 Beverly Walker
 Dianne Walker
 Sylvia Wasielewski



Lewis White



Freshmen

Patty Stout, Pres.
 Tom Mawdesley, Vice Pres.
 Elaine Oberle, Sec.
 Lana Ohmer, Treas.
 Phyllis Fritz, S.C. Rep.





Dianne Ackerman
Tim Allen
Chester Aumack
Berniece Beach
Wayne Beach



Eugene Beebe
Danny Bellamy
Judy Bellamy
Jim Blackmer
Martha Blackmer



Ruth Bodeis
Dale Brown
Lloyd Brown
Blanch Clark
Lee Clark



John Clemons
Jerry Corl
Gary Cowles
Larry Deitz
Richard Dennis



Marie Foster
Bill Fowler
Andrea Fox
Paula Fox
Jim Freeland



Clare Fryers
Shirley Giddings
Gary Gohs
Faye Gordon
Ricky Green



David Haas
Kathy Harris
Marie Harris
Faith Ann Jones
Alice Kilmer

Bertha Kreger
 Larry Lamiman
 John Leitner
 Thomas Leitner
 Russell Lotter



Gene Marietta
 Jerry Marlow
 Linda McKellar
 Bob Middleton
 Carol Moss



Stanley Niezgucki
 Emery Orto
 Barry Peet
 Kathy Powers
 Bill Raymond



Maxine Rich
 Virgil Robinson
 Laura Rogers
 James Secord
 David Seddon



Sharon Seddon
 Linda Sherman
 Janet Sickler
 Leslie Smith
 Mary Ann Spaven



Gary Stephens
 Virginia Stilwell
 Larry Stratton
 Rita Sugden
 Danny Talcott



Roger Talcott
 Leola TerBush
 Raymond TerBush
 Rose Mary TerBush
 Sharon Titus



Sponsored By
 MAYVILLE
 MOTOR SALES



Eva Tomlison
 Larry Tompkins
 Tommy Topham
 Judy Walsh
 James Wenta



Joyce Wheaton
 Marie Williams
 Dean Wingert
 Karen Wright
 Alberta Wymore



Judy York

ABSENT:
 Cheryl Roth
 Jeannie Hunt

Sponsored By WINGERT'S IGA

Eighth Grade



Theresa Karpinski, Pres.
 Susan Gohs, V, Pres.
 Penny Fairfield, Sec.
 Louis Smith, Treas.
 Sheila Kitchen, S.C. Rep.



Shelly Alfano
 Shirley Bailey
 Jane Beebe
 Patsy Bellamy
 Larry Berlin



Gary Blasius
 Mark Boyce
 Blair Bristol
 Brian Bristol
 Ronald Campbell

Ronald Clark
Terry Coutcher
Gail Crawford
Ruth Ann Davidson
John Davis



Patricia Davison
Elaine DeGrow
David Dickie
Ronald Dost
Pat Duncan



Diana Ferguson
Sharon Ford
Daniel Fowler
Vickie Fox
Jean Fritz



Suzan Goodell
Brenda Hack
Larry Ihrke
Jeanne Iverson
Kenneth Jenson



Janis Kennedy
Johanna Klocker
Patty Kontak
Joann Kowalski
Gale Langford



Alvin Louks
Pat Malloy
Phillip Malloy
Nancy Marlow
Lois McKenzie



Betty Meyer
Cynthia Morodan
Paul Naugle
Glenda O'Brien
Gary Osowski



Sponsored By
MAYVILLE
RESTAURANT



Lyle Phelps
 Georgina Pickens
 James Plain
 Paula Rader
 Donald Rau



Linda Raymond
 Mike Raymond
 Kay Richmond
 Linda Robare
 Kenneth Robinson



Larry Robinson
 Carolyn Schafer
 Larry Schneidt
 Nancy Sebert
 Marie Seley



Lucille Sholes
 Millie Sholes
 Susan Spencer
 Linda Steele
 Dean Stilwell



Joyce Stilwell
 Evelyn Stratton
 Diane Sugden
 Rita TerBush
 Terry TerBush



Mickey Walker
 Tom Walker
 Gary Wargo
 Alice Wells
 Cheryl Whitner



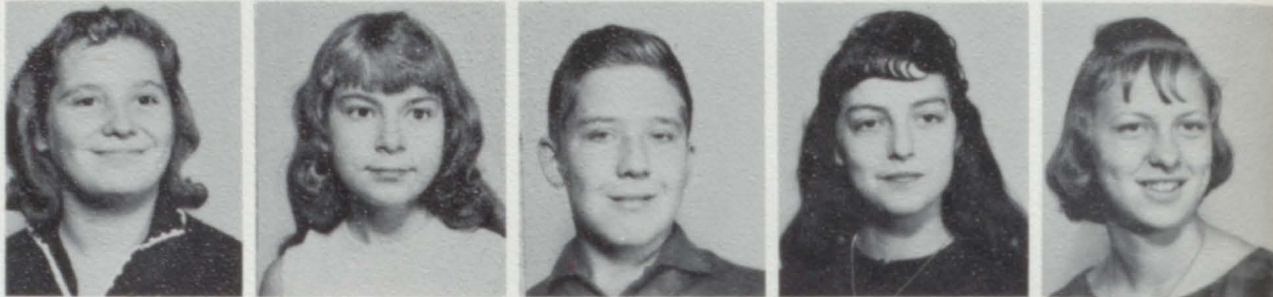
James Will
 Erwin Zapfe
 Dick Zapfe

Seventh Grade

Tim Kreger, Pres.
 Darwin Schott, V. Pres.
 Roy Gotham, Sec.
 Susan Stumpf, Treas.
 Betty Audinet



Joann Bacon
 Eloise Bader
 Phillip Beard
 Karen Beebe
 Carrol Bodeis



Rita Brown
 Ross Brown
 Wayne Brown
 Sherry Carpenter
 Linda Clark



Connie Coutcher
 David Donath
 Tim Drysdale
 Bonnie Ducker
 Clarette Duncan



John Emerson
 Roger Eskelson
 Diana Fairfield
 Clarence Francisco
 Lila Friday



Debra Fryers
 Tommy Garner
 Willis Gorden
 Kathy Grzyb
 Gary Hass
 Sponsored By



MAYVILLE

FRUTCHEY BEAN



Roger Harmon
 Robert Harris
 Roger Harris
 Louis Hicks
 Larry Hiiter



Paul Irvine
 John Kowalski
 Jeanette LaSota
 Susan Maciag
 Greg Maiers



Barry Mathews
 Mary Mawdesley
 Diane McQueen
 Dennis Middleton
 David Moncsman



Michael Moore
 Greg Moss
 David Neahusan
 Don Neahusan
 David Oberle



Mary Lou Palmeter
 Ricky Peterson
 Harvey Searles
 Mary Lou Seddon
 Betty Seley



Wilma Sherman
 John Sickler
 Leo Smith
 Leslie Talcott
 Linda Taylor



Sue TerBush
 Tommy TerBush
 Jerry Tompkins
 Richard Warford
 Leonard Weiler

David Wellington
Ed Wenta
Bev Wheato
Don Wheaton
Mike Wheaton



Robert Whitner
Barb Woern
Diane Wolfgang
Judy Wright
Henry Wymore



Bev York
Bobby Zaradny



Sixth Grade

Karen Allen
Loraine Anderson
Sandy Audinet
Richard Beard
Susan Beebe
Sue Bellamy



Richard Blackmer
Wally Blackmer
Marvin Briggs
Les Brown
Ricky Caldwell
Val Chapin



Gladys Clark
Bernie Cobb
Bill Collins
Bonnie Colosky
Tom Couter
Elaine Dalrymple



Mary Davison
Gary Day
Karen Emerson
Allen Fox
Delores Fox
Larry Freeland





Rodney Friday
 Larry Giddings
 John Giddings
 Jean Gilbert
 Jeanne Harris
 Carol Hormel



Judy Hunt
 Edith Hunter
 Raye Lynn Ihrke
 Lois Jones
 Faye June
 Joe Karpinski



Betty Kelly
 Josie Kontak
 Marcia Kreger
 Larry Manwell
 Jane Lee Mawdesley
 Bill McKenzie



Linda McNeil
 Nancy McSkullin
 Linda Meyers
 David Nichols
 Bobby Neiman
 Ron Moncman



Jeanne Oulette
 Doug Plain
 Billy Petiprin
 Carla Rader
 Harry Robinson
 Daniel Rogers



Linda Sholes
 Clinton Smith
 Don Smith
 Eva Jean Smith
 Cecelia Smock
 Lois Steele



Terry Stephens
 Pam Sullivan
 Connie Sweet
 Mauricia Taylor
 Terry TerBush
 Charlene Watson



Rita Weiler
 Wayne Wellington
 Oza Wells
 Melvin Wheaton
 Danny Woern
 Gary Zapfe



Christopher Zorn

ABSENT:
 Bill Goodwin

Fifth Grade

Gary Anderson
Leland Audinet
Virginia Bader
Bev Bailey
Raymond Beach
Diane Blackmore



Margaret Blackmer
Donald Briggs
Donald Brown
Janet Brown
Ronald Brown
Paula Coutcher



Fred Crandell
Robert Crawford
Gerald Dost
Linda Dost
Carol Flanigan
Joyce Ford



Beth Frenzel
Leanne Fullmer
Jimmy Garner
Lenora Goodell
Lois Gorden
Patty Gotham



Richard Haver
Jeanne Hunt
Diana Kennedy
Dalphine Kreis
Jean Lamiman
Dorothy Long



Jack Long
Martin Lynch
Brian Manwell
Linda Marlow
Carol Marr
Doug McClellan



Bobby McKellar
Billy Miller
Linda Miller
John Myers
Dorothy Neahusen
Gary Oliver



Karen Osowski
Linda Ouillette
Raymond Plain
David Rau
Pamela Riley
Larry Robinson





Phillis Robinson
 Carolyn Sciegel
 Robert Searles
 Patricia Sickler
 Tommy Smith
 Brenda Spreeman



Jacqueline Stover
 Annette Stumpf
 Marie Sugden
 Bobby Sugden
 David Talcott
 Terry Taylor



Mary TerBush
 Ricky TerBush
 Karen Trojan
 Susan Tompkins
 Charles Vat
 Ronald Walker



Steven Wheaton
 Terry Wheaton
 Mary Ann Wilczak

ABSENT:
 Garth Stephens

Fourth Grade



Sandra Baber
 Ted Baraboll
 Charles Berlin
 Gary Blackmer
 Donald Bodeis
 Diane Briggs



Linda Briggs
 Eugene Burrows
 Vickie Clark
 Allen Cox
 Linda Cox
 Kay Lynn Davis



Henry Doer
 Donald Donath
 Ronald Donath
 Sheryl Dost
 Sheryl Fairfield
 Rosalee Fox



Lynn Freeland
 Georgia Germah
 David Gohs
 Linda Hack
 Barry Harris
 William Hicks

Tim Hormel
David Janowski
Susan Johnson
Richard Jones
Sharon Kitchen
Clare Kreger



Paul Kreger
Linda LaSota
Patrick Lynch
Roger Lyons
Nancy Jo Maciag
Vickie Maharg



Connie Marlow
Jack McKenzie
Lorraine Mills
Edward Moncman
Gary Nichols
Duane Oliver



Gary Pake
Victor Palmerton
Marie Rau
Doug Robinson
Judy Robinson
Ted Robinson



Ronald Roth
Cathy Schafer
Paul Scharff
Kenneth Schott
Mary Sceigal
Vicky Seabright



Larry Sherman
Lauraine Sherman
Roger Sholes
Max Steele
Nancy Stuart
Tom Sugden



Michael Sullivan
Kevin Sweet
Keith Talcott
Fred TerBush
Keith TerBush
Michael Tompkins



Patricia Turner
Randy Warren
Janelle Welke
Shelley Wells
Doug Wheaton
John Wolczak



Julie Wilsie
Patricia Wright

Linda Zapfe
Margaret Zaradn

ABSENT:
John Robinson



First Grade



Pam Allen
Gail Barkowski
Carolyn Beach
Steve Beebe
Mike Berlin
Karen Blair



Mike Blonde
Gary Bodeis
Robert Collings
Charlotte Collings
Ginger Collings
Robert Colosky



Sheryl Coutcher
Ron Curell
Carol Flickinger
Randy Frenzel
Julie Fulmer
Debbie Garner



Terry Germaine
Barbara Giddings
Ken Giddings
John Goodwin
Bonnie Gouine
Harriet Grzyb



Delores Haver
Marie Hopp
Ruth Ann Hunter
Jack Johnson
Susan Jones
Larry Kitchen



Sandy Kontak
Penny Lynch
Jim Maharg
Sheryl Malkowski
Faye Mardlin
Beth Manwell



Tommy Marlow
Pam Marr
Sandy McClellan
Jaynie Miller
Ronnie Miller
Terry Miller



Bobby Mills
Tommy Moncman
Steve Meyers
Susan Oliver
Bobby Phelps
Flett Proctor

Floyd Rexin
 Tim Riley
 David Robinson
 Deborah Robinson
 Denise Robinson
 Pamela Robinson



Emily Seeley
 Barbara Shepherd
 Diane Snyder
 Jean Lee Spencer
 Janice Stohlman
 Danny Stover



Patsy Stuart
 Lonnie TerBush
 Deborah Tompkins
 Tim Tracy
 Barbara Wellington
 Joanne Wenta



Gregory Werner
 Diane Wheaton
 Karen Wheaton
 Bonnie White
 Phyllis Woern
 Tommy Woern



Clifford Wolfgang
 ABSENT:
 Cheryllyn McNinch



Second Grade

Sponsored By DR. DONALD GILBERT

Vickie Alfano
 Mike Baber
 Billy Barkowski
 Susan Blonde
 Mike Burrows
 George Chapin



Ron Cobb
 Russell Coucher
 Terry Crane
 Tom Doerr
 Gary Dost
 Debra Fox



David Frenzel
 Doug Gilbert
 Dickie Harris
 Greg Hobson
 Denise Hormel
 Bobbie Hunt





Danny Johnson
 Glen Johnson
 Glenna Johnson
 Beverly Jones
 Marian Karpinski
 Genny Lynn Kennedy



Mary Ann Kowalski
 Harry Kralia
 Ronnie Liskey
 Georgia Lobdell
 Gilbert Long
 Kenneth Lynch



Amy Lou Maguire
 Ruth Maguire
 Billy Maharg
 Jacqueline Maiers
 Billy Marlow
 Larry Middleton



Diane Miller
 Dennis Mitchell
 Pamela Naugle
 Marianne Ouillette
 Linda Palmerton
 Dennis Pake



Linda Robinson
 Mike Scharff
 Alan Seddon
 John Shepard
 Yvonne Smith
 Denise Snyder



Donna Stephen
 Sandy Strasburg
 Gary Stout
 Christine Stover
 Denny TerBush
 Gary TerBush



Randy Tomlinson
 David Tompkins
 Kevin Tompkins
 Dwight Uhl
 Rebecca Van Sickle
 Barbara Warren



Janet Wenta
 Bonnie Wheaton
 Doris Wheaton
 Larry Wilczak
 Carol Wilsie
 James Woern



Mary Woern

ABSENT:
 Rae Earles

First Grade

Pam Audinet
Charlene Aul
Patty Baber
Ricky Blackmer
Raymond Briggs
Jeff Carlisle



Stella Colling
Paul Colosky
Keith Davison
Jimmy Denton
Susie Doerr
Jimmy Duncan



Mike English
Karen Ferguson
Michael Fullmer
Debbie Goodell
Larry Hopp
Connie Hunter



Patty Ihrke
Geraldine Johnson
Doug Jones
Gerald Kreis
Neil Liskey
Georgia Maguire



Marie Maguire
Susan Maharg
Billy Malloy
Kathy Manwell
Steve Manwell
Tom Manwell



Betty Mardlin
Nancy Mawdesley
Calvin McClellan
Marie Rose McLaughlin
Mike McNeil
Tim Middleton



Chris Mills
Earl Mitchell
Frank Osowski
Lon Pritchard
Cynthia Riley
Steve Sherman



George Sholes
Randolph Short
Richard Steele
Mary Stover
Roger Sweet
Tim Teeple



Sponsored By DEANS

MILK PRODUCTS



Terry TerBush
Lori Tompkins
Terry Tompkins
Lynn Tophan
Karen Vat
Gerald Van Sickle



Sally Warren
Larry Wellington
Dougie Werner
Cheryl Wheaton
Sharon Wheaton
Noraine Wiley



Dick York

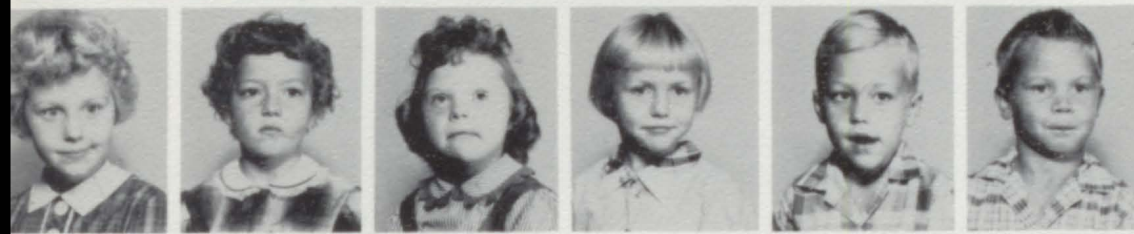
ABSENT:
Jim Bodeis

Sponsored By MAYVILLE MONITOR

Kindergarten



Debra Ahern
Gary Anderson
Kay Barkowski
Fred Beach
Alan Berlin
Sue Blackmer



Karen Bodeis
Karen Brigham
Colleen Brown
Kathy Brown
Mark Chapin
James Crane



James Doerr
Eric Fox
William Frenzel
Linda Germain
Barbara Haas
Sharon Harris



Richard Hiiter
Stanley Howard
William Hunt
Stephen Johnson
Roger Jones
Barbara Kilmer



Kay Langford
Lorraine Lewicki
Jerry Long
Janice Lynch
Perry Lynch
Mary Maiers

John Malloy
Terri Marlow
Bruce McNally
William McLaughlin
Sherry Miller
Timothy Moncman



Paul Myers
George Pezo
Carol Plain
Virgil Rexin
David Riley
Robert Riley



Jody Schafer
Diane Schar
Tina Sholes
Shirley Smith
Cynthia Strasburg
Hubert Stumpf



Renita Thornton
Donald Tompkins
Julie Tompkins
Debra Trojan
Wendell Uhl
Belinda Wymore



ABSENT:
Pamela Burrows
Gary Tomlison

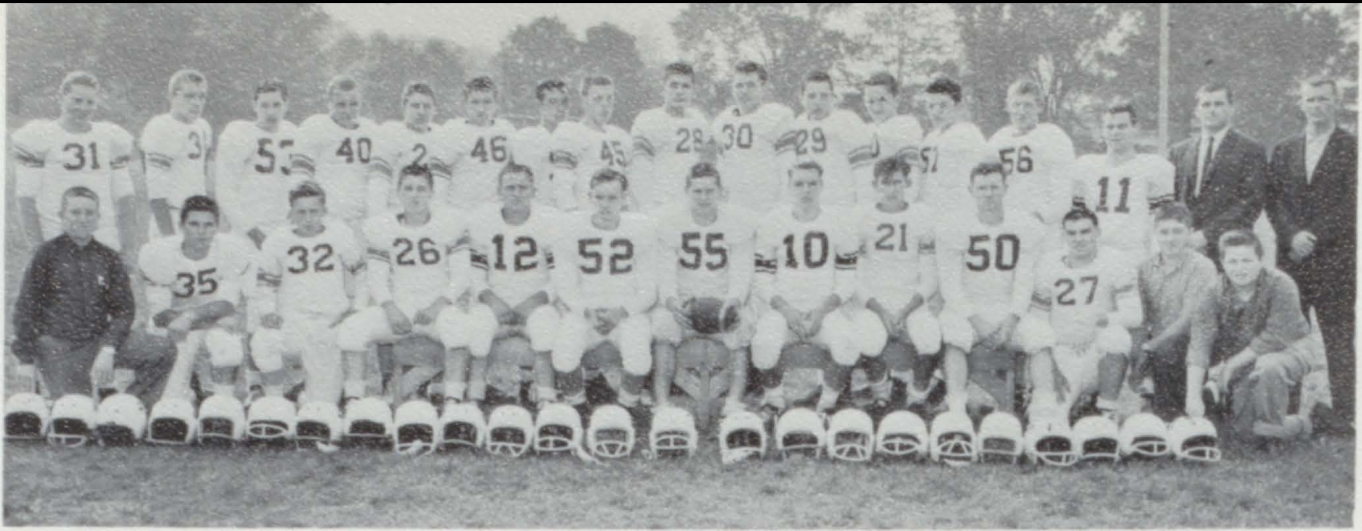
Top Ten Memories

- I New Elementary School opened.
- II Change in political party to Democrats. First Catholic President, John F. Kennedy.
- III Diplomatic relations with Cuba were broken off.
- IV Top Movie - The Apartment
- V Top actor and actress - Burt Lancaster and Elizabeth Taylor.
- VI Top Song - Never on Sunday.
- VII Fad - Pointed Shoes and Short Skirts.
- VIII Second year to have an exchange student. Liisa Ponkanes from Finland.
- IX Second year for Mayville to send an exchange student. Judy Wells - Germany, Jim Welke - Finland.
- X The Echo was a great achievement in U. S. science.
- XI May 5, United States first astronaut "Project Mercury."



61

Sports



FRONT ROW: Left to Right, L. Smith, G. Steele, E. Sholes, T. Tubbs, A. Friday, R. Smith, D. Coxe, C. Aumack, L. Smith, B. Kreger, T. Shay, D. Wingert, E. Beebe. BACK ROW: B. Topham, D. Ohmer, B. Lynch,

E. Orto, C. Johnson, L. Coutcher, A. Edgeworth, I. Duncan, C. Mercer, D. Turner, J. Morodon, T. Topham, R. Shepherd, J. Clark, D. Brown; Coaches R. Andrews, and R. Hill.

Varsity Football Scores

X	Mayville	0	-	Reese	26
X*	Mayville	0	-	Akron-Fairgrove	26
X	Mayville	6	-	Sebewaing	36
X*	Mayville	14	-	Kingston	6
X	Mayville	7	-	Unionville	38

X Conference Games
* Home Games

LEFT TO RIGHT: C. Gohs, C. Seddon, J. Proctor, L. White.



Cheerleaders



Hike



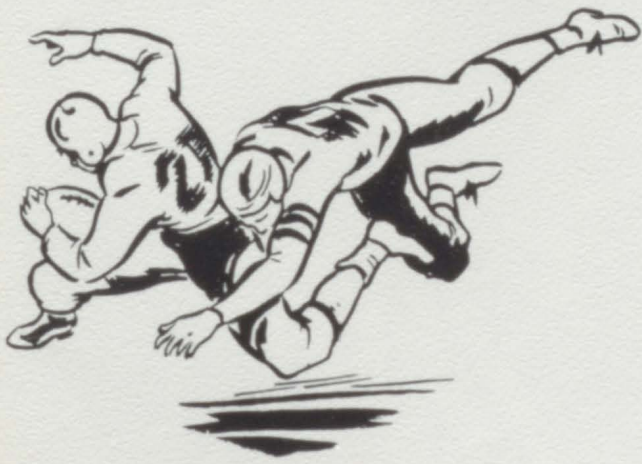
BACK ROW: Left to Right, L. Smith, L. Brown, T. Leitner, R. Lotter, B. Middleton, R. TerBush; Coach, R. Hill. FRONTROW: D. Bellamy, J. Clemons, C. Fryers, J. Wentz, C. Aumack, L. Lamiman, L. Tompkins, E. Beebe.

Junior Varsity Football Scores

	Mayville	19	-	Millington	0
	Mayville	20	-	Akron-Fairgrove	7
*	Mayville	13	-	Sebewaing	0
*	Mayville	19	-	Millington	6
*	Mayville	20	-	Unionville	6

* Home Games

J.V. Football Cheerleaders



BACK ROW: Left to Right, L. Ohmer, L. Sarles, R. Sugden. FRONT ROW: P. Lynch.



BACK ROW: Left to Right, D. Gifford, C. Mercer, L. Hall, L. Smith, B. Kreger, D. Secord, T. Shay. FRONT

ROW: H. Brown, L. Coutcher, A. Sugden, C. Middleton, C. Aumack.

Varsity Basketball Scores



COACH ALFRED TITUS

North Branch	61	Mayville	63	*Unionville	45	Mayville	64
*Millington	61	Mayville	44	Reese	74	Mayville	55
*Reese	55	Mayville	49	*Akron-Fairgrove	74	Mayville	56
Akron-Fairgrove	57	Mayville	52	*North Branch	63	Mayville	60
*Sebewaing	59	Mayville	63	Sebewaing	81	Mayville	65
Millington	65	Mayville	58	*Kingston	82	Mayville	62
Kingston	54	Mayville	45	Unionville	57	Mayville	56

* Home Games

Varsity Basketball Cheerleaders

Let's get the ball!



LEFT TORIGHT: J. Proctor, P. Lynch, C. Gohs, C. Seddon.



FRONT ROW: Left to Right, J. Wenta, C. Aumack, J. Clemons, J. Freeland, D. Bellamy, R. Moore, J. Welke.

BACK ROW: L. Pollion, B. Shepherd, T. Tophan, B. Raymond, S. Baxter, L. Lamiman, A. Edgeworth.

Junior Varsity Basketball Scores

North Branch	33	Mayville	44	Reese	44	Mayville	42
*Millington	20	Mayville	54	*Akron-Fairgrove	46	Mayville	68
*Reese	31	Mayville	49	*North Branch	48	Mayville	47
Akron-Fairgrove	44	Mayville	37	Sebewaing	61	Mayville	57
*Sebewaing	38	Mayville	50	Unionville	36	Mayville	56
*Unionville	53	Mayville	46				

* Home Games

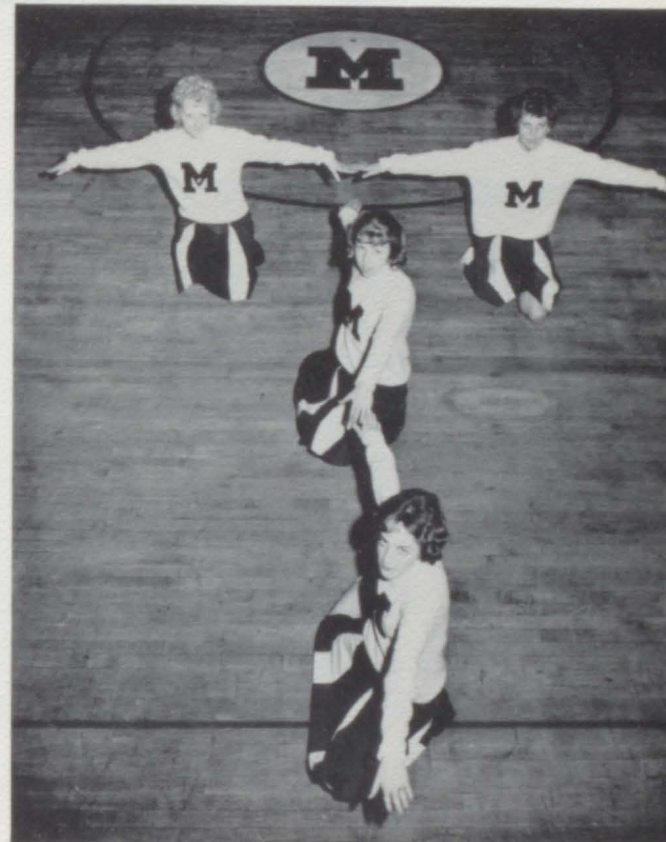


COACH PAT McSHERRY

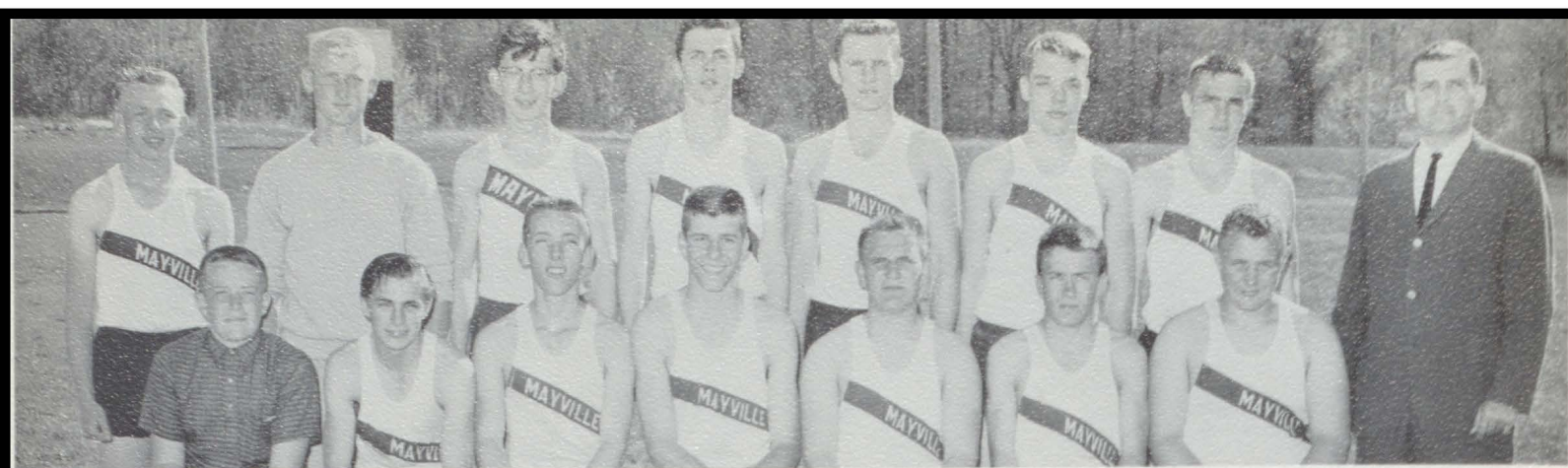
Junior Varsity Basketball Cheerleaders



Wildcats



P. Lynch, R. Sugden, L. Ohmer, L. Sarles.



Track

BACK ROW: Left to Right, T. Ackerman, J. Clark, J. Wenta, B. Drysdale, B. Kreger, C. Aumack, D. Walker, Coach R. Andrews. FRONT ROW: L. Smith, Mgr.;

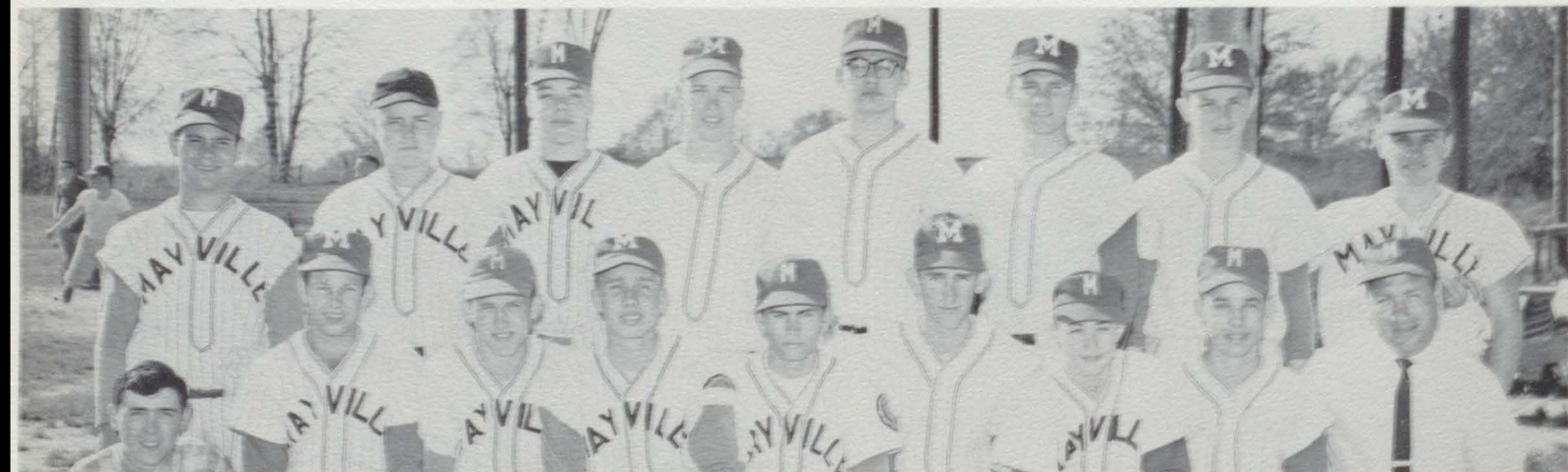
Leitner, T. Allen, L. Hall, A. Friday, E. Sholes, E. Orto. ABSENT: N. Alfano.



Varsity Club

BACK ROW: Left to Right, A. Edgeworth, T. Shay, L. Hall, D. Gifford, Coach Al Titus. MIDDLE ROW: C. Aumack, R. Smith, D. Coxe, A. Sugden, L. Smith, J.

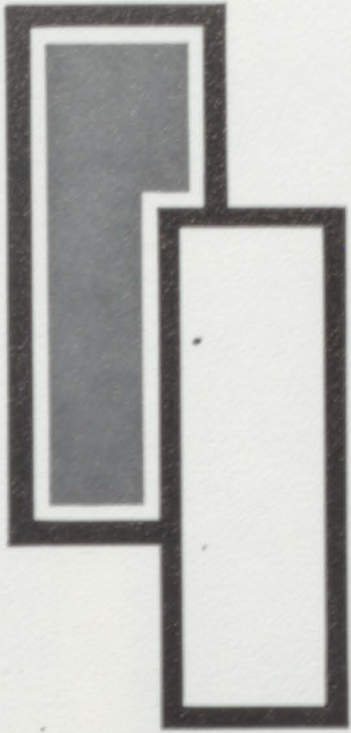
Welke. FRONT ROW: H. Brown, L. Coutcher, T. Tubbs, C. Middleton, B. Kreger, A. Friday, D. Secord.



Baseball

BACK ROW: Left to Right, B. Brown, C. Aumack, C. Aumack, C. Middleton, C. Mercer, B. Kreger, T. Topham, H. Brown. FRONT ROW: J. Welke, A. Clemons, L.

Coutcher, A. Sugden, D. Secord, L. Smith, L. Lamiman, A. Edgeworth, Coach Al Titus.



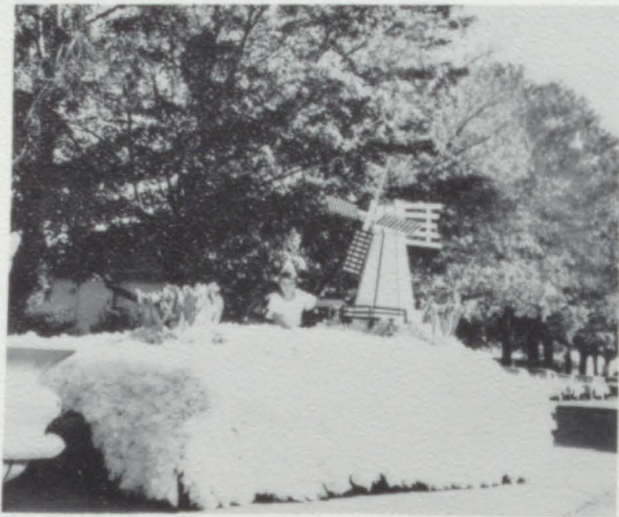
61

Activities



1st Prize:
EIGHTH GRADE
FLOAT

2nd Prize:
ELEVENTH GRADE
FLOAT



3rd Prize:
NINTH GRADE
FLOAT

Homecoming

Twelfth Grade Float



Tenth Grade Float

QUEEN AND CANDIDATES: C. Morodan, I. Curell, M. Erb (queen)
S. Stump, G. DeGrow, J. Sickler.



Costumes: Robinson's From Fostoria
(Hillbilly Wedding)



Future Miss America

Pets: Brian Smith (Pet Dog)





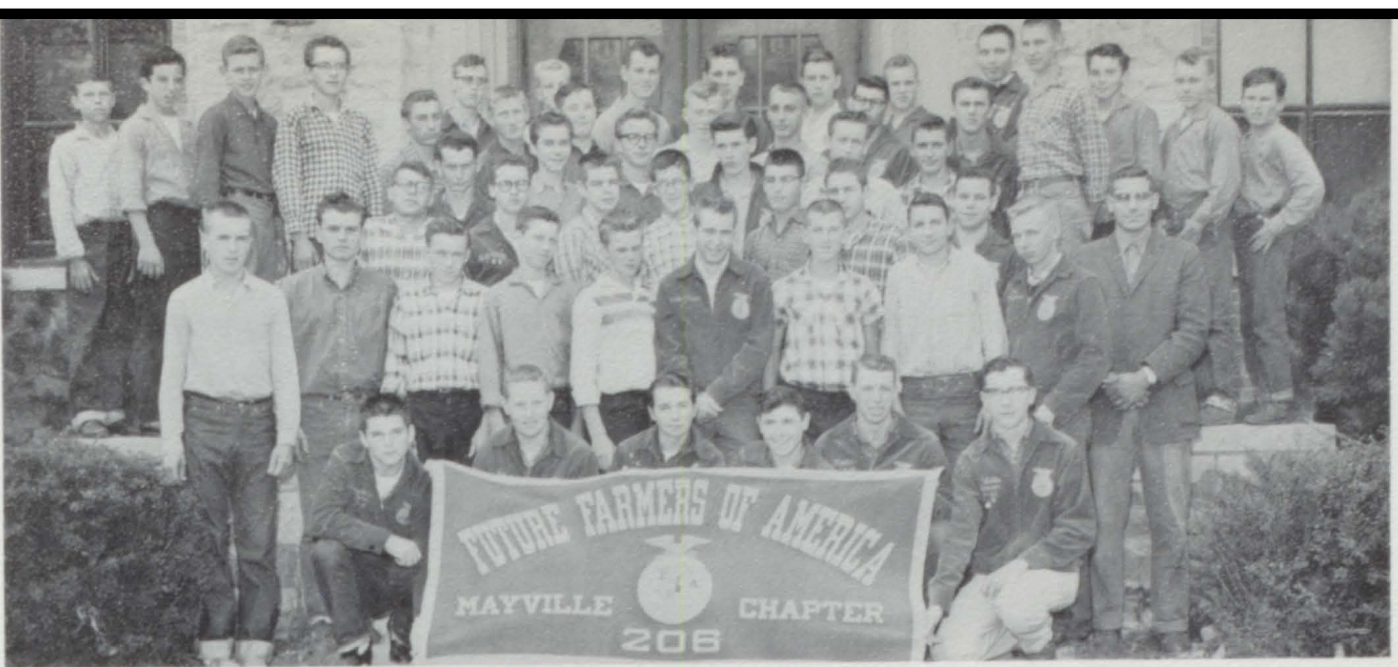
FRONT ROW: Left to Right, P. Fritz, B. Steele, Mrs. Seley, A. Bodeis, M. Erb, C. Gohs, A. Woern, S. Sarles, G. Bennett, C. Seddon, J. Fowler, P. Cobb, R. Sugden. SECOND ROW: C. Moss, N. Jacot, D. Summerset, S. Peet, E. Tomlinson, J. Sickler, M. Williams, K. Harris, S. Seddon, D. Ackerman, F. Jones, J. Petiprin, R. Bodeis, B. Beach, M. Spaven. THIRD ROW: E. Harris, I. Curell, J. Kelly, J. Smith, N. Malkowski, S. TerBush, J. Hunt, P. Ouillette, J. Walsh, A. Wymore, M. Phelps, D. Goodell,

K. Powers. FOURTH ROW: M. Harris, E. Oberle, J. Bellamy, S. Titus, J. Broomfield, L. McKeller, L. Sarles, B. Bader, G. DeGrow, P. Lynch, C. Sugden, N. Myers, B. Thornton, M. Blackmore, V. Sebert. FIFTH ROW: B. Clark, S. Johnson, E. Brown, C. Bader, J. Brown, E. Fowler, C. Grimshaw, L. Rogers, R. Marietta, D. Dalrymple, S. Ferguson, C. Roth, D. Orto, J. Lotter, A. Bennett.

F.H.A.



Table of Installation



F.F.A.

FRONT ROW: Left to Right, G. Steele, B. Topham, S. Gergely, J. Welke, C. Middleton, J. Welke. SECONDROW: L. Stratton, H. Brown, E. Sholes, J. Dennis, R. Kowalski, B. Garner, D. Harmon, R. TerBush, T. Ackerman, Mr. R. Howard. THIRD ROW: J. Meyer, B. White, L. White, P. Mawdesley, D. Hass, C. Johnson, D. Brown. FOURTH ROW: L. Niezgucki, G. Schlattman, M. TerBush, E.

Blackmer, L. Coutcher, D. Brown. FIFTH ROW: C. Fritz, J. Clark, T. Welke, R. Green, R. Pickens, L. Meyer, P. Phelps. SIXTH ROW: R. Dennis, L. Brown, J. Corl, S. Niezgucki, K. Manwell, R. Lotter, L. Marr, G. Marietta, B. Fowler, L. Marr, W. Beach, G. Gohs, J. Marlow, J. Blackmer.



STAR CHAPTER FARMER
Clare Middleton



POINT SYSTEM AWARD
Steve Gergely



SCHOLARSHIP AWARD
Jim Welke



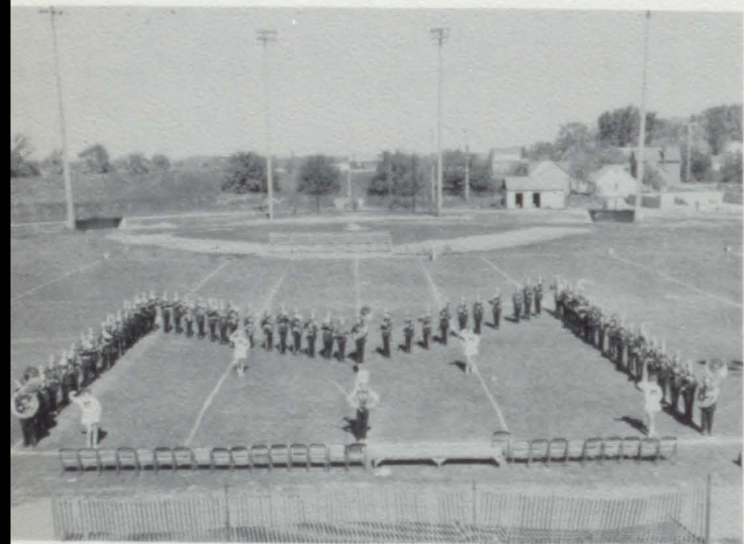
STAR GREENHAND
Bill Fowler



BACK ROW: Left to Right, T. Shay, D. Seddon, P. Fritz, J. Welke, D. Peterson, N. Marlow, F. Kennedy, C. Mercer, D. Turner. FIFTH ROW: R. Sugden, J. Fowler, S. Gohs, J. Meyer, S. Ferguson, L. Smith, A. Wells, M. Harris, E. Harris, P. Lynch, B. Maiers, D. Louks. FOURTH ROW: N. Malkowski, S. Matheson, L. Wright, J. Sickler, C. Roth, T. Welke, D. Brown, S. Sarles, D. Sugden, G. Garnsey, G. DeGrow, C. Sugden, C. Morodon. THIRD ROW: S. Kitchen, D. Wingert, L. McKenzie, R. Louks, D. Dalrymple, J.

Fowler, G. Putman, J. Welke, B. Iverson, L. White, G. Muntz, B. Chapin, P. Fairfield, J. Wells. SECOND ROW: L. Steele, P. Rader, L. McKeller, M. Shay, S. Middleton, C. Moss, D. Orto, M. Erb, J. Petiprin, J. Broomfield, M. Williams, P. Kontak, J. Iverson. FIRST ROW: Director, F. Pliska; P. Lynch, L. Ohmer, M. Phelps, S. TerBush, C. Grimshaw, D. Gifford, B. DeGrow, J. Smith, L. Sarles, C. Gohs, S. Vat.

Senior Band



The Big M



Drum Major & Majorettes

LEFT TO RIGHT: C. Gohs, L. Sarles, S. Vat (Drum Major); P. Lynch, L. Ohmer.

Junior Band

FIRST ROW: Left to Right, G. Moss, G. Hass, L. Taylor, P. Malloy, V. Stilwill, B. Woern, E. Stratton, W. Brown, R. Peterson, J. Kowalski. SECOND ROW: J. Sickler, E. DeGrow, E. Bader, B. Ducker, L. Smith, R. Davidson, J. Bacon, L. Ihrke, R. Dost, E. Beebe. LAST ROW: F. Pliska, D. Fairfield, L. Friday, N. Sebert, M. Seley, K. Richmond, S. Stumpf, B. York, W. Sherman, D. Wolfgang.



FRONT ROW: Left to Right, L. Wright, P. Lynch, P. Lynch, M. Phelps, C. Grimshaw, L. Sarles, G. Muntz, C. Morodon. SECOND ROW: C. Sugden, G. DeGrow, S. Kitchen, J. Welke, J. Broomfield, P. Fritz, E. Harris, M. Harris. THIRD ROW: S. Matheson, A. Wells, S. Sarles, J. Fowler, L. McKenzie, B. Maiers, D. Orto, M. Erb, J. Wells.

Pep Band



Victory, Victory is our cry!



Junior Glee Club

FRONT ROW: P. Fox, A. Fox, D. Ackerman, R. TerBush, J. Kowalski, L. Sholes, F. Gordon, M. Sholes, K. Powers, L. TerBush, J. LaSota, E. DeGrow, P. Kontak, S. Goodell, G. Crawford, S. Ford, K. Harris. SECOND ROW: G. Pickens, B. Hack, M. Spaven, J. Beebe, B. Beach, R. Bodeis, V. Fox, S. Alfano, T. Karpenski, M. Rich, S. Bailey, K. Wright, R. Davidson. THIRDRROW: J. Kennedy, N. Marlow, A. Wells, E. Stratton, N. Sebert, A. Kilmer.

FOURTH ROW: L. Robare, C. Schafer, B. Clark, P. Bellamy, P. Fairfield, L. Raymond, S. Gohs, J. Wheaton, A. Wymore, J. Walsh, C. Morodon, P. Rader, L. Steele, J. Fritz, J. York. FIFTHROW: S. Giddings, L. McKenzie, K. Richmond, V. Stillwill, B. Kreger, F. Jones, G. O'Brien, D. Sugden, J. Stilwill, S. Kitchen, E. Tomplison, L. Spencer, B. Meyer, P. Davison, D. Ferguson, J. Hunt, J. Klocker, M. Seeley.

Senior Glee Club



FRONT ROW: Left to Right, B. Gordon, M. Foster, M. Phelps, A. TerBush, J. Crowl, R. Gross. SECONDROW: B. Smith, G. Malloy, M. Crowl, J. Peteprin, M. Malloy. THIRD ROW: Mr. Pliska, J. Sweet, E. Brown, L. Maiers, M. Kilmer, D. Summersett. FOURTH ROW: V. Sebert, D. Rich, M. Louks, S. Howay, S. Sebert. FIFTH ROW: N. Jacot, C. Bader, S. Johnson, G. Wheaton.



Student Council

BACK ROW: Left to Right, P. Fritz, C. Sugden, G. DeGrow, L. Sarles, T. Mawdesly, T. Welke, J. Welke, S. Kitchen, T. Karpinski, S. Gohs, P. Stout. FRONT ROW:

B. Kreger, Mrs. Ewing, L. Hall, T. Tubbs, J. Wells, S. Sarles, L. Ponkanen.

Newspaper Staff



BACK ROW: Left to Right, B. Steele, S. Ferguson, C. Middleton, L. Smith, A. Bodeis, M. Steele. FRONT ROW: S. Gouine, Mr. Jones, J. Wells, M. Erb, B. Chapin.

Annual Staff



BACK ROW: Left to Right, S. Ferguson, A. Bodeis, J. Wells, S. Gouine, B. Chapin. FRONT ROW: Mr. Jones, M. Erb, B. Steele, M. Steele.



Nurses Club

THIRD ROW: Left to Right, P. Cobb, S. TerBush, L. TerBush, B. Bader, E. Fowler, C. Bader, S. Johnson, J. Hunt, M. Harris, N. Jacot, L. TerBush. SECOND ROW: K. Powers, C. Smith, A. Wynmore, J. Bellamy,

B. Smith, A. Bennett, A. Fox, J. Walsh, D. Ackerman, B. Clark, F. Jones, K. June. FRONT ROW: E. Harris, S. Peet, Mrs. Seley, L. Wright, M. Erb, J. Fowler, N. Malkowski, P. Lynch, C. Gohs, I. Curell, R. Marietta.



Truth for Youth Club

THIRD ROW: Left to Right, F. Jones, D. Ackerman, J. Leitner, L. Clark, P. Jenson, R. Lotter, T. Leitner, A. Kilmer, E. Beebe. SECOND ROW: B. Steele, J. Lotter, N. Jacot, C. Bader, D. Wingert, T. Mawdsley, D. Manwell,

E. Middleton, V. Stilwell, M. Smith, M. Lotter. FRONT ROW: M. Kilmer, S. Leitner, G. Garnsey, Mrs. Ewing, J. Wells, T. Raymond, L. Ponkanen, J. Petiprin, B. Clark, J. Walsh.

Library Club



FIFTH ROW: Left to Right, K. Powers, E. Oberle, A. Wynmore, M. Harris, A. Fox, R. Sugden, B. Beach, V. Buhl, D. Secord, L. Ohmer, S. Titus, J. Wheaton, L. Maiers, M. Audinet. FOURTH ROW: P. Stout, G. Myers, S. Johnson, G. Wheaton, V. Sebert, O. Wasielewski, P. Jenson, J. Lotter, D. Orto, J. Hiiter, L. White, N. Smith, S. Wasielewski, D. Oliver. THIRD ROW: M. Phelps, D. Summerset, J. Sweet, M. Smith, E. Brown, B. Bader, E.

Fowler, S. Brown, C. Bader, N. Jacot, P. Cobb, P. Ouillette, N. Myers. SECOND ROW: D. Goodell, C. Smith, J. Kelly, I. Currell, E. Harris, C. Gohs, L. TerBush, C. Roth, J. Wsowske, J. Walsh, M. Smith, B. Clark, S. Peet, J. Broomfield. FRONT ROW: B. Steele, R. Fox, S. Leitner, M. Blackmore, Miss Kingsland, W. Lamphere, J. Finch, B. Smith, J. Bellamy, S. McQueen, B. Walker, R. Marietta, B. Kreger.



61

Humor



"Ron"



"Dale"



"Bob"



"Judy"



"Gordon & Edna"



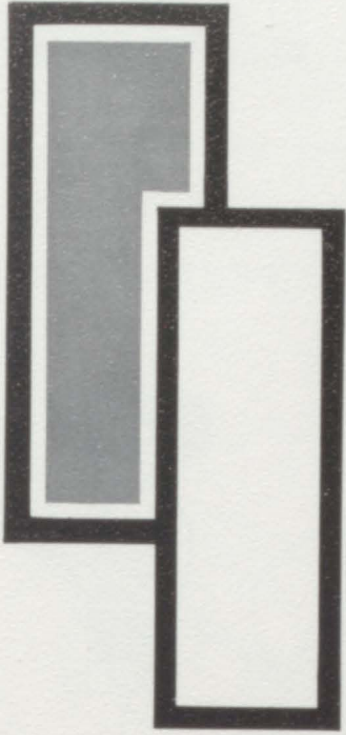
"Alice, Peggy, Gail, Nancy, and Lovina"



"Terry, Mike, and Tom"



"LaVon and Betty"



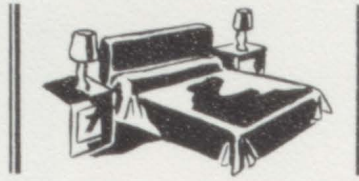
61

Advertising

SHERKS DRUG STORE
AND
MAYVILLE
5 & 10 STORE



BLACKMORE
&
TUBBS
FURNITURE



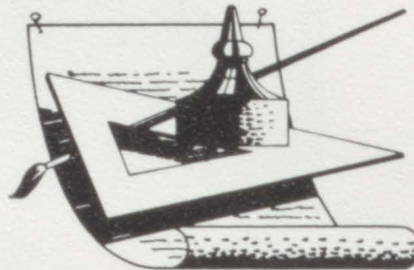
WINGERTS
IGA



MAYVILLE
RESTAURANT
Good Food



MAYVILLE MONITOR
Art Work
&
Newspaper



MAYVILLE
FRUTCHEY BEAN



MAIERS & SONS
DELIVERY SERVICE

Best Wishes
*to You Through
the Years*

SMITH TABS
INSURANCE
Be Prepared



FIRE-AUTO-OWNERS'
INSURANCE

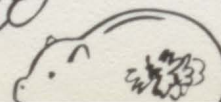


DR. GILBERT
Congratulations
To The Class Of
"61"



MAYVILLE STATE
BANK
Mayville - Fostoria

a brighter future



MAYVILLE
LUMBER CO.



MAYVILLE
MOLDING
COMPANY



MAYVILLE
MOTOR SALES

Fred Moss



ERNIE IHRKE
DEANS
COUNTRY CHARM
DAIRY PRODUCTS



RUMMELS
STUDIOS

Frankenmouth



FOSTORIA GRAIN
COMPANY

Dealers In
Grain, Beans, Seeds
Coal



MAYVILLE MERCHANTILE

Save



On

Dry Goods

Shoes

LYON BROTHERS

Mobilheat
And Gas

Fostoria, Michigan

STATE-WIDE TV
Appliances

Westinghouse



PINK POODLE
RESTAURANT

Mayville - VI 3-9181

MAYVILLE HARDWARE

Plumbing
& Electrical



Heating

L. D. FOX

Ford Cars & Trucks
Falcon & Thunderbird

WILKENSON
Mayville



CHEMICAL
Michigan

PEOPLES
Gas And Oil
Mayville, Michigan

Congratulations To
The Class
Of '61



MAYVILLE FOOD
LOCKER
Groceries & Meats

SCHRAN'S
INSURANCE

Mayville, Michigan

DR. ROBERT
DRYSDALE
&
FAMILY

MAYVILLE

MAYVILLE CREAMERY
PORTRAITS BY SARLES
DON WOOD
BROWNS BARBER SHOP
GAMBLE STORE

PETERSON WELDING
MAYVILLE SUNOCO
WERNER'S GULF SERVICE
WOERNS HOTEL
CHARLES DALRYMPLE

CARO

CARD EGG CO.
DR. LLOYD SAVAGE
DR. E. H. MERRILL
BEN FRANKLIN STORE
ELLIOTTS' STUDIO

CARD FLOOR COVERING
SHERIDANS
ESTER'S FLORAL SHOP
WILLIAM MONASSEE
TERRELL'S

JANKS

FOSTORIA

FRENCH'S IGA

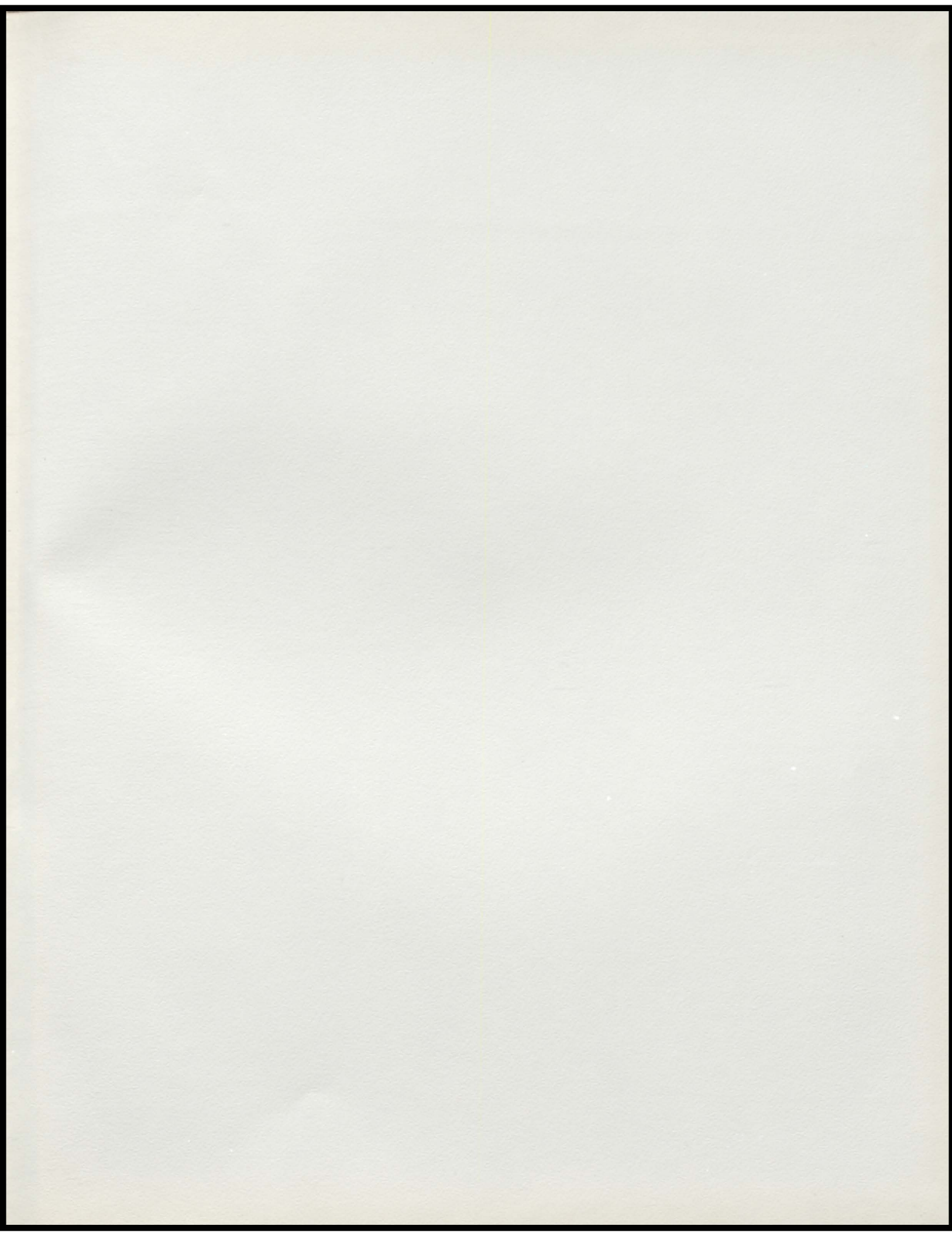
WENTA MOBIL SERVICE



61

Autographs

Autographs





Lithographed & Bound by
WALSORTH
Marshall, Mo., U. S. A.

